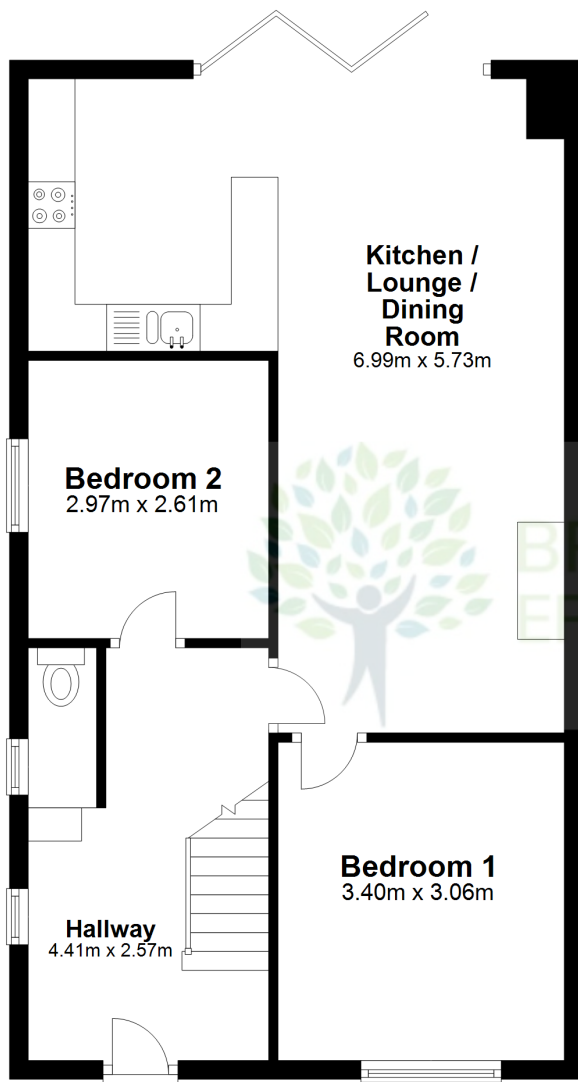


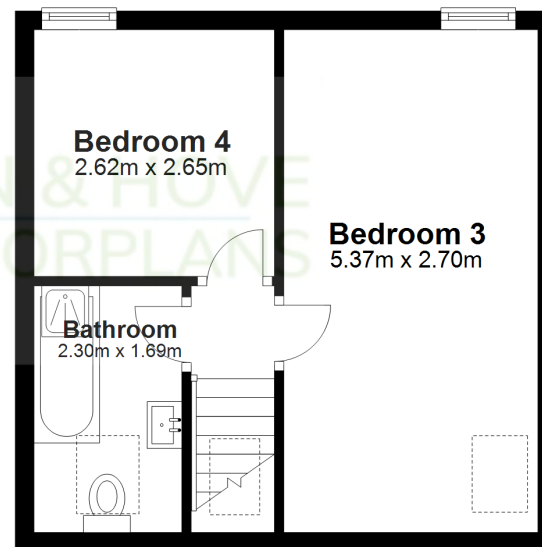
### Ground Floor

Approx. 60.1 sq. metres



### Loft Rooms

Approx. 28.7 sq. metres



Total area: approx. 88.9 sq. metres

This Floorplan is for illustrative purposes only.  
Measurements are approximate. Not to scale.  
Copyright 'Brighton & Hove EPCs' [www.brightonhoveepc.co.uk](http://www.brightonhoveepc.co.uk).  
Plan produced using PlanUp.

**16 Stoney Lane, Shoreham by Sea**